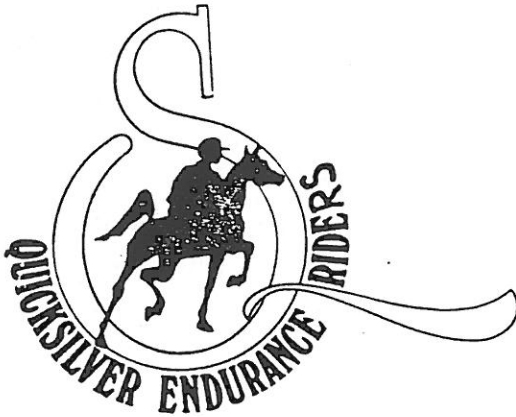


QUICKSILVER QUIPS

AUGUST 1998



President: Brian Reeves
Vice-President: Diane Enderle
Secretary: Marvin Snowbarger
Treasurer: Kathy Miller

Board Members: Lori Oleson
Trilby Pederson
Valorie Weizer



Published by the Quicksilver Endurance Riders, Inc.

P. O. Box 71, New Almaden, CA 95042
Julie Suhr, Editor..TEL & FAX 408-335-5933

Another month has passed, and most of us are riding as much as possible. With the weather finally co-operating, we can use most all of the trails again.

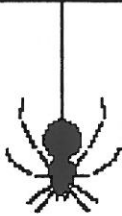
Last month we had the barn dance at Trilby's. It went so well that we are going to do it again this month. We will still have the B-B-Q, and then do some two-stepping. You don't want to miss it!

August brings the infamous Western States 100 Mile Trail Ride. Tevis fever has struck our club, with several members riding. Those riding that I know of are: Steve, Marvin, Trilby, Melissa, Mark and myself. Lots of other members are going to either crew or to lend moral support to us that have the fever. So next months BBQ should have some interesting stories by those that were there. It's my first time riding Tevis. In the past I have either worked the ride or crewed it. Should be interesting considering they had a ski party on the 4th of July at Squaw Valley!!! Should I bring snowshoes???? This is definitely NOT the desert!

Happy Trails, *Brian*



The Santa Cruz Horseman's Association offered to put on a ride & tie in conjunction with their Fireworks 50 endurance ride on August 1, 1998 at Graham Hill Show Grounds in Santa Cruz. The course will be out and back to Wilder Ranch, essentially like the Champagne R&T was. Two vet checks. Twenty five to thirty miles (not 34 like last year). There will also be short course available for \$25 per person. The R & T's will start an hour and a half after the 50's or at about 7:30. Interested parties should probably contact one of the following for an application. The fee is expected to be \$110 per team.



Please spread the word to your friends.

Steve Shaw
155 Baltusrol Drive
Aptos, CA 95003
(408) 685-3436
sshaw@pacbell.net

or

George Hall
P. O. Box 936
Aptos, CA 95001
geohall@pacbell.net

or

Don Roth
408-438-5961



Maryben's doctors have given her the "go-ahead" to ride again. Now she has to make a decision as to the proper mount and she will be off and running. I wonder if she has told Ken that he just lost the best crew person anyone ever had!

Pat McKendry has a great van and trailer for sale. The '75 Dodge Van and '81 Circle J 2 horse trailer (with a dressing room) is the perfect set-up for someone. She would like to sell them together for \$6,000 or if necessary, they can be sold separately. The whole shebang is in good condition so call Pat at 408-779-3648.

Trilby Pederson has some space at her stables for anyone wanting to board a horse. There are stalls and pasture space with a gate that leads into Quicksilver Park.

She also has for sale a two horse 1981 Featherlite Trailer complete with corrals for \$5,000. And if you need something to pull it with, she also has a 1989 Ford Van 1 ton with a new engine, new tires and conversion (propane stove, sink and cabinets. \$6,000. Trilby can be reached at 408-997-7500.

Steve Shaw has some really nice experienced conditioned horses for sale. He can be reached at 831-685-3436. 831 is the new Santa Cruz area code. We are no longer 408.

Pat McKendry won the July Quicksilver Quips contest. She was the first member to correctly identify the members pictured from the 1981 Yearbook. Actually, she started out on the right foot by correctly identifying #1 as herself. after that came

- #2 Connell Allison
- #3 Maryben Stover
- #4 Melissa (Plaggmeier) Ribley
- #5 Bing Voight
- #6 Jeri Scott



Jay's Curly Boy

Jay's Curly Boy, aka Peanuts, was owned by Pat and Jay McKendry. Actually, I think he was supposed to be Jay's horse but every time I saw him, Pat was on his back. Of course, she did let Jay crew for him.

Peanuts was 25 years old with no teeth and going blind when Pat and Jay made the decision to put him down recently. Coincidentally, a few weeks later he and Pat were pictured in the Quips with Julie's latest puzzle.

He was picked out of a herd of horses in Nevada at the age of 5 months and never made his owners sorry they picked him. He was so cute as an adult that I bet he was adorable as a baby with that curly coat and his bright Appaloosa spots.

Peanuts was the first Curly horse I ever saw and I saw a lot of him on the trails. He was an AERC 1000 mile horse and was registered in 6 different registries:

ARAB

AMERICAN BASHKIR CURLY

ENDURANCE HORSE REGISTRY OF AMERICA

REGISTERED APPALOOSA

APPALOOSA COLOR BREEDERS ASSOCIATION

THE AAA-APPALOOSA AND FOUNDATION
BREEDERS INTERNATIONAL

As Pat told me, there is an empty and lonely place on the McKendry Curly Horse Ranch.

Maryben Stover

working on a second edition of **PET LOVERS** and are soliciting stories from anyone. They can be up to 1200 words long and must uplift or inspire. These stories are primarily about dogs and cats, but there are some horse ones too. If you want your special pet to be immortalized, here's your chance. This is a book for everyone except those that weep easily (such as Maryben—she shouldn't be allowed to read it) I bought my paperback copy for about \$7.50 at Costco. Julie



AMERICAN ENDURANCE RIDE CONFERENCE
The AERC had its mid-year Board Meetings in Kansas City on July 18th & 19th. Our Club is particularly fortunate in having three representatives on this board—Barbara McCrary, Maryben Stover and Trilby Pederson. These dedicated endurance riders (who travel at their own expense) spend many hours trying to determine the our wishes and it is their job to carry them to the Board Meetings. It is our job to let them know what our wishes are. They will be reporting back to us and it behooves us to keep ourselves informed if our sport is to grow in the right directions. We should all feel free to call them when we have concerns or questions.

QUICKSILVER BOOK REVIEW

All animal lovers, great and small, should have in their permanent library **CHICKEN SOUP FOR THE PET LOVER'S SOUL—Stories About Pets as Teachers, Healers, Heroes and Friends.** It is a collection of about a hundred heart warming short stories of three to five pages. The authors range from James Herriot, Barbara Bush and Jimmy Stewart to people who no one has ever heard about previously. Each one has a loving story to tell. They are now

*Look back at our struggle for
freedom,
Trace our present day's strength to its
source;
And you'll find that our pathway to
glory,
Is strewn with the bones of a horse.*

author unknown

INAUGURAL HASHKNIFE RIDE

through the eyes of Ken Cook

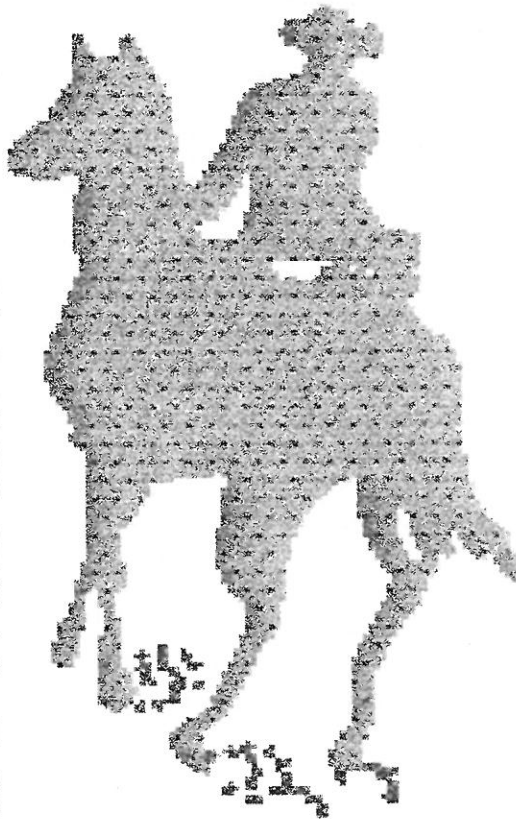
Ron and Ruth Waltenspeil put on another beautiful and well managed ride with the 1st running of the Hashknife Ride. This is a gorgeous ride with some spectacular vistas and generally good footing for the horses. But do not confuse this ride with the Sonoma Ride, the Hashknife Ride is as challenging as it is beautiful.

We (Maryben, Heather, and myself) arrived on Friday afternoon to find the ridecamp starting to fill up. After being given the grand tour on an ATV, looking for a suitable parking place for Maryben's handicap requirements, and finding none..... I came back to find that Maryben had conned Ruthie into letting us park in the vet check!! See it does pay to have the handicapped with you, sometimes.

That evening at the ride meeting Ruthie did one of her usual commentaries on the ride with a few jokes, and announced a new " Pissin and Moanin " award. This one was cool, it was a steers skull with horns. I wanted THIS award. I thought it would look good with some war paint and feathers, nicely mounted on the wall. So I proceeded all weekend to piss and moan, but Ruthie saw through me and refused to let me have it! Bummer.... But I did get honorable mention at the awards banquet!

Sat morning was warm and I knew it was going to get hot that day, so I gave Rocky extra electrolytes and got ready for this " easy ride ". Started up front with Caroline Day and her Pinto Arab. As we were getting ready to leave Ron was telling us that the first loop had a pretty good climb to start with but the second half of the loop was pretty flat. And I believed him!! The first climb was a series of roller coasters, pretty steep ones, and lasted for several miles. Once we were over the top we descended into a very pretty canyon and rode creek bottom for miles, criss crossing the creek and sometimes riding down the middle of the creek. This was definitely a test for horses that don't like water! Finally coming out of the creek to ride the fire road along side it until we came to the vet check. The vet check was in the creek bottom on a gravel bar, so there was lots of water. I vetted Rocky through and

Heather showed up on Nattie right behind us, Nattie was looking real good. Soon as our 1/2 hr hold was up we were off to do the flat part of the ride.. Right! Someone needs to show Ron what flat is! We climbed again up and over another mountain, although not as steep or tough as the first one, still a good steady climb. Back into another valley that roller coasted up and down and finally brought you back by the vet check across the creek and to the road from hell. This was about 2 miles of steep asphalt road, with a shoulder to ride on, but it was steep and hot. I know Rocky was calling me all kinds of bad names by the time we got to the top! I don't think I was on his hit parade at that time. Hit list maybe..



But we made it.. Rocky vetted through fine, except his gut sounds were non existent. Seemed most of the horses were lacking gut sounds after that hot climb. Rechecked in 10 min and he was fine. We were in 1st or 2nd place, not sure which. But I knew we had to slow down for the second loop, it was a repeat of the first, and this time I knew there were no flat loops in this ride! After our hour hold I saddled up and left to do the second loop. Lari Shea, Caroline Day and two other riders passed us at a water hole on the way up the hill, but somehow I don't think Rocky cared. We did most of the second loop with Elaine, cant

remember her last name, she is a vet from Lodi. At the last vet check Rocky did his usual quick P&R and we left on our own again, against Rocky's wishes, he was leaving his new friend. We headed out on that "flat loop" again. About 2 miles into the last loop Heather and Nattie caught up with us, this helped Rocky's mental state a bit, and we were off and running again. We made it up the black top road again to find, to eveyones' relief. that Ruthie had changed the trail and cut out a final hill and sent us straight into the vet check. Thank you Ruthie!! At this point Heather, Elaine and I were riding together and crossed the finish line side by side, in 4th place.

(continued on the next page)

(Hashknife by Ken Cook (Continued))

We let the finish timers sort out the finishing order. They gave 4th to Heather, 5th to me and 6th to Elaine. We were just happy to be back at camp and to have finished with sound and happy horses. That night we had a fabulous barbeque, The owners of the Cooley Ranch, think I spelled it right, roasted a steer in a pit and served us a delicious meal. The owners of this ranch deserve a big hand for allowing us the use of their land, and for all the work they did to prepare trails for our use. They really went out of their way to accomodate us.

At the awards meeting that night I made my last play for the " pissin and Moanin " award, but Ruthie wasn't biting. She said no way! I was disappointed. As usual the Quicksilver Club was well represented, we had Maryben working the vet check, (actually I think she was just entertaining the vets) Julie and Bob Suhr, Deb Manion, this was her horses first 50, so congratulations, Steve Shaw, Heather Bergantz, and myself, Ken Cook. We had a 100% completion rate for the club. Lari Shea got BC and 1st place. This is a great ride and I will return to do it next year.

Mark, Traci and Lauren Will Be Missed

Well, the time is here - we're moving. Mark has already moved to a place in Cool we are renting until our new house is built. The escrow on our condo here in San Jose will close on July 24 and then I will be moving too. The reality of it is starting to sink in!!

We bought 12 acres in Auburn Lake Trails in Cool and are hoping to break ground on our house by the first week in September. We're hoping to be moved in February, hopefully sooner. In the meantime, we are renting a little cabin on 50 acres which is very close to our property in Cool. This morning Mark spotted his first mountain lion about 1/4 mile from our front door. Exciting to say the least!! We went for a ride on Saturday and, from our property in Auburn Lake Trails, we were on the Tevis trail in 15 minutes. Our new address:

Mark and Traci Falcone
Lauren Anderberg (530)885-80129
1930 Highway 193 (916)785-2457 Mark @ work
P. O. Box 622
Cool, CA 95614-0622



WINE COUNTRY 50 WITH JUDY ETHERIDGE

This year I wanted to try the Ft. Schellbourne XP (more about that ride later) and since Orion was getting back into shape after a layoff caused by an injury received on the Death Valley ride I decided we needed to do a trial 50. Didn't want to drive for two days to eastern Nevada just to ride one day! A friend, Lisa, was starting her new horse, Mikey, on his first 50 so I decided to team up with her on the Wine Country 50 which I knew to be challenging ride having done the first 25 miles (pulled for lameness) at its first year. We pulled into camp which is easily accessible from the highway and near services which was handy since we had had a flat on the truck on the way up. Always something when we go to a ride! The weather had started to warm up a bit the afternoon before the ride but a much-appreciated cloud cover came in on ride day. The ride was tough and rocky in many places except for the last loop which overlooked the open space above Vallejo where I spent my formative horse years. After going for a hike, my husband Ken decided that Napa is an Indian word for rocks. Lisa and I took our time and rewarded with many views of the surrounding Valley. Our ride was the many volunteers traffic on the trail including manager, Jessica Tuteur's



were beautiful Napa enlivened by directing ride parents.

The trail was well-marked for the most part—Lisa and I had heard that there were trail marking problems on the previous years ride. We came back to a tasty burrito dinner with two kinds of cake for dessert and picked up our awards—either a tee-shirt or a sleeveless slingshot tee with the ride logo painted on.

The 1998 Wine Country 50 was a well-managed, challenging ride that I think more riders need to support because profits go to several open space entities among which is my favorite, the Bay Area Ridge Trail Council.

(Your Quicksilver Editor got positively teary eyed when Judy VOLUNTEERED to contribute to QQ. Her faith in human nature has been restored and she knows the rest of you will never let it wane.)

If you have missed Marvin Snowbarger's excellently executed minutes this month it is because we were too busy partying last month to have a meeting. Everybody had such a good time that we have decided to repeat it all with another party at Trilby's barn on Wednesday, August 12th. A little rehashing of the Tevis Cup will be in order amid talk of the upcoming Swanton Pacific on the 15th. What a month!



The Hoofs of the Horses

*The hooves of the horses - O' Witching and Sweet
is the music earth steals from the iron-shod feet;
No whisper of lover, no trilling of bird,
Can stir me as hoofs of the horses have stirred.*

*They spurn disappointment and trample despair,
and drown with their drum beats the challenge of care,
With scarlet and silk for their banners above,
they are swifter than Fortune and sweeter than love.*

*On the wings of the morning they gather and fly,
In the hush of the night-time I hear them go by -
The horses of memory thundering through
With flashing white fetlocks all wet with the dew.*

*When you lay me to slumber no spot you can choose,
but will ring to the rhythm of galloping shoes,
and under the daisies no grave be so deep
but the hooves of the horses shall sound in my sleep.*



William H. Ogilvie

EAST LANSING, Mich. -- "As the summer heats up and the potential for heat stress in horses increases, horse owners need to consider four management factors. They are ventilation, water consumption, rations and conditioning," said Ken Gallagher, a Michigan State University Extension equine veterinarian.

"Relative humidity is significant, because it impairs the evaporation of sweat," he said. "The sweating process is the primary cooling mechanism in the horse."

Any increase in the environmental heat stress index--the sum of the temperature and humidity--above 140 should be an indication for caution, especially for working horses.

One way to help horses get through hot weather is to ensure that the barns they live in are adequately ventilated. "If necessary, fans should be used to increase air flow," said Gallagher.

There are fans with mist attachments available that add water vapor to the air. They can cool an area by as much as 10 degrees. "This method is less effective when the relative humidity is high," he said.

Assuring horses consume enough water is important anytime, but is critical during potential heat stress conditions. A 1,000-pound, idle horse needs a minimum of 10 to 12 gallons of good quality water each day.

As the air temperature rises, even idle horses sweat and consume more water. Adult horses can easily consume 20 to 25 gallons of water per day if they are working hard and the temperature is above 70 degrees.

"If a horse is hand-watered, offer water frequently during hot weather, even if the animal does not appear thirsty" Gallagher said. "When sweating profusely, a horse's thirst mechanism does not always keep up with bodily needs."

Rations should contain electrolytes and salt. The sodium and chloride from salt are important ions that should be provided in the ration on a daily basis.

Rations for an idle mature horse should contain .5 percent salt. Working horses should have 1.0 percent salt in the diet.

As extra insurance, salt blocks or loose salt in a feeder can be provided, as individual horses vary in their salt requirements. "If horses have not been given extra salt previously," Gallagher said, "provide small amounts initially, because some horses will overconsume."

All working horses lose some electrolytes through perspiration, regardless of environmental temperatures.

As muscles function, heat is given off as a byproduct. This energy metabolism increases body temperature, often to a range of 102 to 106 degrees, at least temporarily. Normal body temperature for adult resting horses is 100 degrees. Sweat glands are triggered by this metabolic process and resulting perspiration moderates the body temperature to a safe zone.

"The harder the horse works, and the higher the ambient temperature, the greater the fluid and electrolyte loss through sweating," said Gallagher. "Most horses that eat a balanced ration that includes trace mineralized salt and are drinking adequate water will replenish the elec-

trolyte system on a daily basis."

Harder working animals in hot weather should be given supplemental electrolytes, he said. "Serious electrolyte and fluid loss can result in a variety of health problems, from premature fatigue to muscle cramps."

In extreme cases, because a decrease in water consumption or certain electrolytes can disrupt sweat gland function, the horse could go into shock from heat stroke.

There are commercial products available that can be added to feed or drinking water. But horse owners should be aware that some animals will drink less water because of a products' taste.

"If the horse refuses to eat or drink supplements, a veterinarian can give electrolytes by intravenous injection," said Gallagher.

Crude protein should not exceed 15 percent of the total ration in the adult athletic horse, according to him. It is known that excessive protein can generate extra body heat in the digestion process. This places more demands on the horse's "cooling system."

Good management requires owners and trainers to acclimate horses to the environment with proper fitness programs before working a horse when the temperature and relative humidity are high.

Even a well-conditioned horse that is apparently adjusted to the working environment can become overly stressed if temperature and relative humidity are above normal.

Pleasure horses used infrequently should not be ridden hard, even for short period when weather conditions are stressful.

Horses with heat exhaustion will show signs of weakness, stumbling, increased respiration, even after resting, and an increased temperature in the range of 102 to 106 degrees.

"Their temperatures might remain elevated, even after being rested or 'cooled out,'" he said. "In this phase the horse usually continues to sweat somewhat."

In heat stroke syndrome, symptoms are more severe and dangerous, with body temperatures remaining above 106°F, and typically, sweating stops.

In cases of either heat stroke or heat exhaustion, Gallagher recommends a veterinarian be called.

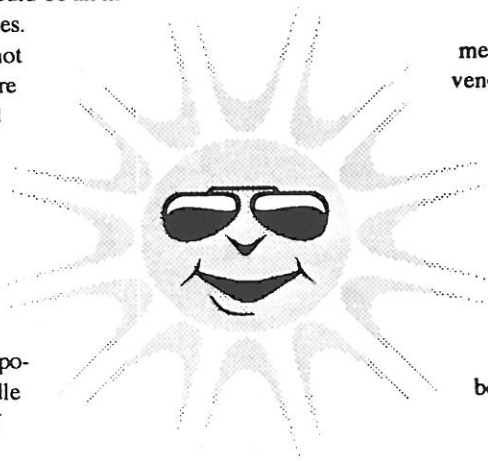
"Before the veterinarian arrives, stand the horse in the shade, and if there is no breeze provide air movement with a fan if possible," he said. "Wet the horse's body with water."

If the water is warm to cool, apply to the feet and legs for a few minutes and then gradually cover the entire body. If the water is cold, apply only to the feet and legs for 30 minutes and gradually wet the rest of the horse.

"Do not attempt cold-water enemas," Gallagher said. "Veterinarians can use the technique, if necessary."

Small amounts (several swallows) of water can be given at 10 minute intervals until the veterinarian arrives."

ΩΩΩΩ



Hot Weather Care of Horses

Pogonip plan keeps bikes, horses at bay

By ROBIN MUSTTELL
Sentinel staff writer

SANTA CRUZ — The Homeless Garden Project is in, but bikes and horses will still be limited to a single connector trail in Pogonip based on the latest recommendation to the Santa Cruz City Council.

The Greenbelt Committee, a three-member subcommittee of the City Council, on Thursday backed recommendations made earlier this week by the Parks and Recreation Commission.

The plan limits equestrian and bike access through Pogonip to a new connector trail from the upper

UC Santa Cruz campus through Pogonip to Rincon fire road in Henry Cowell Redwoods State Park.

In backing that proposal, the committee rejected a Parks and Recreation Department staff plan to allow multi-uses for the new connector trail as well as possible future use of Rincon, Spring and Brayslaw ser-vice roads.

Only hikers would be allowed on Spring and Brayslaw trails.

"The most persuasive argument is the reality of what goes on at Wilder (Ranch State Park)," said Mike Rotkin, a city council and committee member, citing the heavy bike use.

"It will just change the quality of what goes on there."

More than environmental considerations, Rotkin said his was a decision based on "ambiance."

Hikers urged the committee members to keep all but the connector trail for their exclusive use. "This is one park I've really been enjoying because there aren't any bikes in there," said Bruce Engelhardt.

Allowing bikes on the trails would create the same conflicts that exist on West Cliff Drive and Wilder Ranch State Park, said proponents of the hikers-only plan. Bike riders criticized their exclu-

sion as politically motivated to please hikers.

"Overall, the real question is no longer environmental, but political — whether you're asking hikers to share," said David Baskin, an attorney who has worked to open the trails to bikes and horses. "The riding community — whether equestrian or bike riding — has been waiting since 1989 to have restored access."

There was unanimous support on the committee and in the audience to establish the connector trail, which is important to bike riders and equestrians because it connects horse trails in Henry Cowell Red-

woods State Park with those in Gray Whale, and then Wilder Ranch State Park.

The Greenbelt Committee, however, differed with the Parks and Recreation Commission in voting to locate the Homeless Garden Project on about 9 acres on Pogonip.

"I don't think a 9-acre garden is an unreasonable amount of use," said Rotkin.

The recommendations of the Greenbelt Committee, Parks and Recreation Commission and parks department staff will go to the city council at a special meeting July 21.

TRY NOT TO RUN OVER THE BEER CANS, PARTNER..WE PLAN TO RECYCLE THEM...



©1998 SAN JUAN COUNTY SENTINEL

WJSS

Santa Cruz Sentinel
Sunday, July 12th
Read it and Weep

Horses in Heaven?

An old man and his horse were riding down this dirt road with fences on both sides, they came to a gate in the fence and looked in, it was nice grassy, woody areas, just what an old horse and man would like, but, it had a sign saying 'no trespassing' so they walked on.

They came to a beautiful gate with a person in white robes standing there. "Welcome to Heaven," he said. The old man was happy and started to ride his horse in. The gatekeeper stopped him. "Animals aren't allowed, I'm sorry but he can't come with you."



"What kind of Heaven won't allow animals? If he can't come in, then I will stay out with him. He's been my faithful companion all his life, can't desert him now."

"Suit yourself, but I have to warn you, the Devil's on this road and he'll try to sweet talk you into his area, he'll promise you anything, but, the horse can't go there either. If you won't leave the horse, you'll spend Eternity on this road."

So the old man and horse rode on. They came to a rundown fence with a gap in it, no gate, just a hole. Another old man was inside. "S'cuse m Sir, my horse and I are getting mighty tired, mind if we come in and rest in the shade for awhile?"

"Of course, there's some cold water under that tree over there, along with a bucket to water your horse. Make yourself comfortable."

"You're sure my horse can come in? The man down the road said animals weren't allowed anywhere."

Would you come in if you had to leave the horse?"

"No sir, that's why I didn't go to Heaven, he said the horse couldn't come in. We'll be spending Eternity on this road, and a glass of cold water and some shade would be mighty fine right about now. But, I won't come in if my buddy here can't come too, and that's final."

The man smiled a big smile and said "Welcome to Heaven."

Thank you to Ken Cook for this contribution to Quicksilver Quips.

SIXTEENTH ANNUAL SWANTON PACIFIC 100

Saturday, August 15, 1998

Recd _____
Paid _____
Due _____

RIDER _____ AGE _____ RIDER AERC# _____

DIVISION: HVYWT(211#/up) _____ MIDWT(186-210#) _____ LTWT(161-185#) _____ FTHRWT(160#/below) _____ JUNIOR _____

ADDRESS _____ PHONE (____) _____

CITY _____ STATE _____ ZIP _____ FAX (____) _____

HORSE _____ BREED _____ SEX _____ AGE _____ COLOR _____ HORSE AERC# _____

OWNER'S NAME/CITY/STATE _____ OWNER AERC# _____

As a participant in the SWANTON PACIFIC 100 ride, I agree to abide by the rules of AERC and the aforementioned ride. I understand that endurance riding involves being in remote areas for extended periods of time, far from communications, transportation, and medical facilities; that these areas have many natural and man-made hazards which ride management cannot anticipate, identify, modify, or eliminate; that horses can be excitable, difficult to control, and unpredictable; and that accidents can happen to anyone at any time. I agree to take full responsibility for myself and the animal I am riding. I will hold AERC, ride management, all ride personnel, and all property owners over whose land the ride passes blameless for any accident, injury, or loss that might occur due to my participation in the ride, and free from all liability for such injury or loss.

I HAVE READ AND UNDERSTOOD THIS LIABILITY RELEASE

RIDER'S SIGNATURE _____ DATE _____

FOR JUNIOR RIDERS:

PARENT/GUARDIAN SIGNATURE _____ DATE _____

Signature gives permission for emergency medical treatment.

JUNIOR DATE OF BIRTH _____ NAME OF SPONSOR _____

PLEASE CHECK ALL BOXES THAT APPLY TO YOUR ENTRY

ENTRY FEES - AERC MEMBER: TROPHY - \$150 DATE PLATE - \$125 (ONLY IF YOU ALREADY HAVE A TROPHY) CERTIFICATE - \$125
 ENTRY FEES - AERC JR. MEMBER: TROPHY - \$130 DATE PLATE - \$105 (ONLY IF YOU ALREADY HAVE A TROPHY) CERTIFICATE - \$105

NON-MEMBERS - PLEASE ADD \$10 AERC BOOKKEEPING FEE

ENTRY FEE		\$ _____
NON-MEMBER FEE - \$10 (IF APPLICABLE)		\$ _____
STATE DRUG TESTING FEE (MANDATORY)	ADD	\$ _____ 3.00
NUMBER OF FRIDAY DINNER TICKETS WANTED _____ @ \$ 9		\$ _____
NUMBER OF <u>EXTRA</u> SUNDAY BREAKFASTS WANTED _____ @ \$10 (1 INCLUDED WITH ENTRY)		\$ _____
TOTAL AMOUNT ENCLOSED		\$ _____

PLEASE MAKE ENTRY CHECK PAYABLE TO:
PLEASE RETURN ENTRY & CHECKS TO:
FOR INFORMATION:

BIG CREEK RANCH
BARBARA McCRARY, 330 SWANTON ROAD, DAVENPORT, CA 95017
PHONE: 408-423-4572 FAX: 408-423-8869

ALL ENTRIES MUST BE POSTMARKED BY WEDNESDAY, AUGUST 5th OR FAXED BY 10 PM SATURDAY, AUGUST 8th AND MUST BE PRE-PAID. CHECKS ARE NOT DEPOSITED UNTIL AFTER THE EVENT, AND PROMPT REFUNDS ARE GIVEN FOR CANCELLATIONS REQUESTED BY PHONE, MAIL, OR FAX BEFORE AUGUST 15th. CANCELLATIONS MADE AFTER AUGUST 11th WILL BE SUBJECT TO DEDUCTION OF THE VALUE OF THE MEALS. NO REFUNDS FOR NO-SHOWS OR FOR CANCELLATION REQUESTS MADE AFTER THE RIDE IS OVER. WE RESERVE \$15 IF THE HORSE FAILS TO PASS THE PRE-RIDE VET CHECK.

"The Legend Continues . . ."

SIXTEENTH ANNUAL SWANTON PACIFIC 100 **AUGUST 15, 1998**

HISTORY: Logging, lumber, and forest products have been a part of the industry of the Swanton area since well back into the 1800's, and trains played an important part in that industry. In mapping out our ride in its first year, 1983, we found we were passing through three areas with railroading history: the Pescadero Creek watershed, where Santa Cruz Lumber Co. used locomotives to haul huge logs into their sawmill at Waterman Gap; the Little Creek watershed, where San Vicente Lumber Company's logging shay struggled up ten-percent grades; and the Swanton valley, where the Ocean Shore Railroad terminated its track northbound from Santa Cruz. The name Swanton Pacific comes from a railroad built by our late neighbor Al Smith, using a 83-year-old steam engine on a narrow-gauge track laid along part of the old Ocean Shore route. All but the Swanton Pacific have long since passed into history . . .

INFORMATION: Camp is located in a deep canyon, so bring warm clothing for horse and rider. Creek water is suitable for horses, but riders should bring their own drinking water. A phone is available in camp for credit card or reverse charge calls only. Showers, portable toilets, and trash receptacles are provided. **NO OPEN FIRES PERMITTED. CHARCOAL GRILLS, PROPANE OR WHITE GAS STOVES, AND CAMP LANTERNS ARE OK. SORRY. NO DOGS, OR MOTORIZED CYCLES OR ATVs.**

COURSE: The trail is a loop, with camp at start and finish. There are 1-hour gate holds at 34 miles and 69 miles, 15-minute gates at 47 miles and 94 miles, and a half-hour gate hold at 86 miles, **ALL EASY CREW ACCESS.** Riders without crews may send supplies in to the longer vet checks with a ride manager. The trail will be well marked with pink and white flagging, signs, dolomite, and chemical light sticks. Marshals will be stationed where deemed necessary. There is plenty of water and quite a bit of shade on the trail. The scenery is breathtaking, from meadows and grassy hilltops to deep wooded canyons, high shale ridges, the Pacific Ocean, and magnificent redwood forests. There will be just a sliver of moon this year, so be sure to bring small flashlights. Twelve-hour light sticks will be available for purchase. **SMOKING IS ALLOWED ONLY AT VET CHECKS, NEVER ON THE TRAIL.**

PRE-RIDE VETTING: Upon vet arrival (usually about 3:00 PM) - 8:00 PM Friday.

PRE-RIDE DINNER AND BRIEFING: 6:30 PM - Friday. Please purchase tickets with entry. Extra dinners are usually available directly from the caterer, but we do not guarantee this. Briefing follows at 8:00 PM.

RIDE START: 5:30 AM - Saturday.

RIDE FINISH: 5:30 AM - Sunday. Time allowed - 24 hours overall, including vet checks.

POST-RIDE EXAM OF HORSES: Within one hour after each individual finish.

AWARDS BREAKFAST: 7:30 AM - Sunday.

BEST CONDITION JUDGING: About 9:00 AM, Sunday.

AWARDS PRESENTATION: After breakfast, probably about 10:00 AM. The completion award for Swanton Pacific 100 is a beautiful redwood plaque with brass plate etched with the SP100 logo. There are spaces for nine date plates, one for each year the rider finishes. The plaque (trophy) is given to the first-time rider. In succeeding years, the entry fee is significantly reduced, since the only award given will be an additional plate. The SP trophy has become a coveted and prestigious award, representing a significant equestrian accomplishment. A paper certificate is optional at a reduced fee.

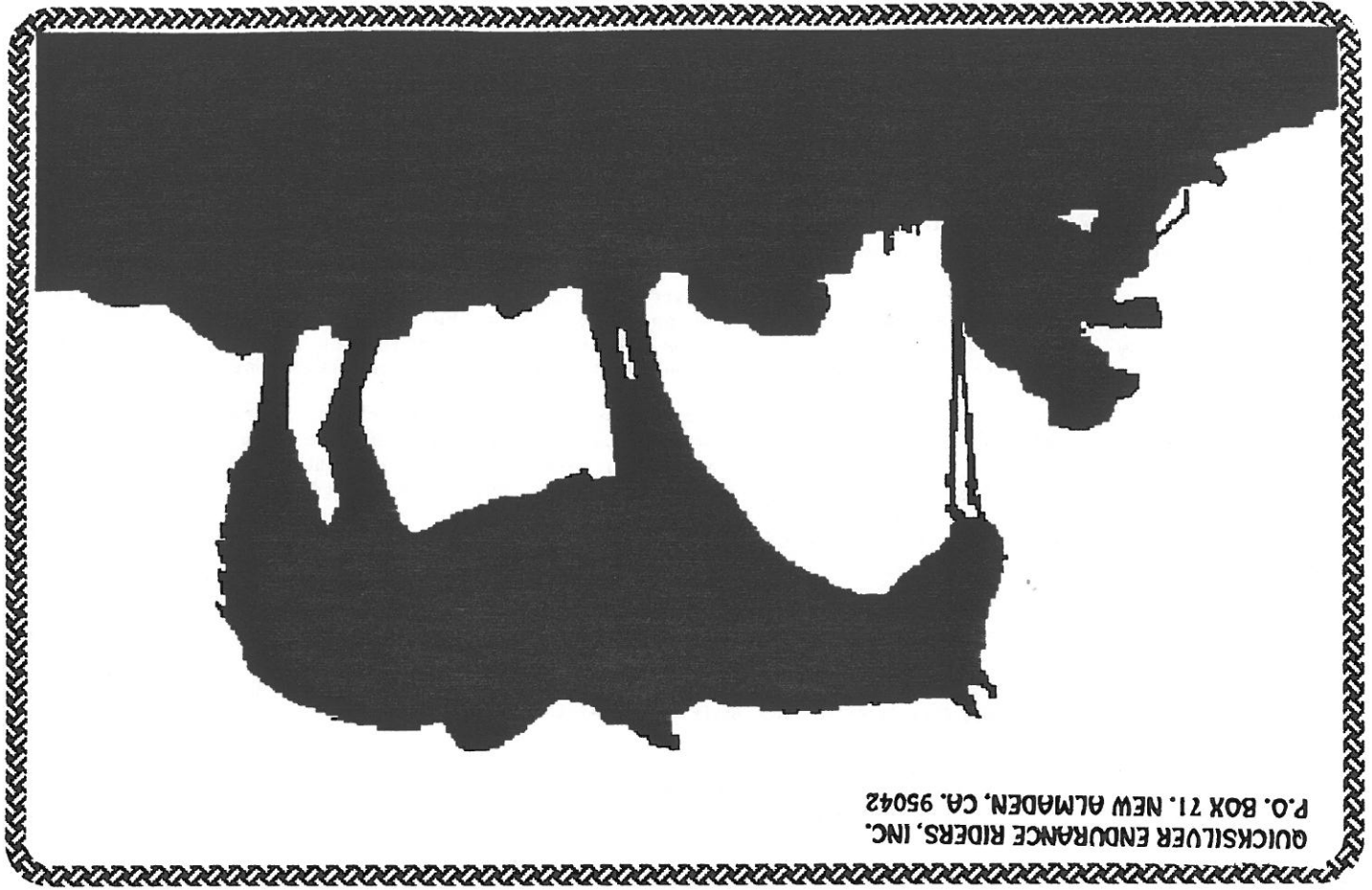
RIDE RULES: The ride is sanctioned by AERC and will comply with AERC rules and policy. Juniors must wear helmets. Ride management reserves the right to interpret rules as would be necessary to insure the continuity of the ride and to settle any questions that may arise from any incident that might occur during the ride. There have been some sensitive issues arise during the past years regarding private property rights, so pre-riding is not allowed. We are fortunate to be able to obtain permission to run the ride through some of these private property areas, so please do not jeopardize our privileges. The future of this ride depends on the good-will of our neighbors.

AMENITIES: We treat SP riders as the special people they are! We offer treats along the trail: carrots for horses, candy, fruit, soft drinks for the riders. There are hot showers for your enjoyment after the ride. Unfortunately, it has become prohibitively expensive to have a farrier on standby, so do not count on one; please come prepared with a well shod horse and Easyboots.

IMPORTANT NOTE: ENTRIES MUST BE POSTMARKED BY WEDNESDAY, AUGUST 5th OR FAXED BY 10 PM, SATURDAY, AUGUST 8th AND MUST BE PRE-PAID. CHECKS ARE NOT DEPOSITED UNTIL AFTER THE EVENT, AND PROMPT REFUNDS ARE GIVEN FOR CANCELLATIONS REQUESTED BY PHONE, MAIL, OR FAX BEFORE AUGUST 15th. CANCELLATIONS MADE AFTER AUGUST 8th WILL BE SUBJECT TO DEDUCTION OF THE VALUE OF THE MEALS. NO REFUNDS FOR NO-SHOWS OR FOR CANCELLATION REQUESTS MADE AFTER THE RIDE IS OVER. WE RESERVE \$15 IF THE HORSE FAILS TO PASS THE PRE-RIDE VET CHECK.

DIRECTIONS: Camp is located 20 miles north of Santa Cruz and 60 miles south of San Francisco. From Santa Cruz, take Highway #1 north towards Half Moon Bay. Go past Davenport (9 miles N of Santa Cruz) for 1.5 miles, turn R on the first road past the Swanton Road sign. Go 4.5 miles to Old Seaside School, now a private residence. Turn R through a green pipe gate, and follow this dirt road 1.5 miles to the main camp, a meadow with picnic tables set on it and a creek running through it. You may camp anywhere in meadows before or after the main camp, as well as designated areas in the main camp itself. From San Francisco Bay area, take Highway #1 or Highway #92W to Half Moon Bay, then south toward Santa Cruz approximately 30 miles into Santa Cruz County, across Waddell Creek bridge, past Big Creek Lumber Co. mill, and turn SHARPLY LEFT onto Swanton Road .3 mile south of the mill. Proceed on this winding road for 2.5 miles to the dark red schoolhouse, turn L through the green pipe gate. Watch for our signs. Camp will be open from Friday AM through Sunday noon. Riders coming from great distances (7 hours driving time or more) may arrive as early as Thursday evening, but please call us first.

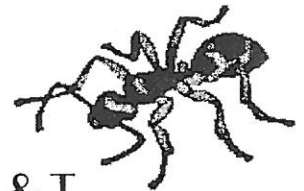
TO CONTACT RIDE MANAGEMENT: Lud or Barbara McCrary Phone: 408-423-4572 FAX: 408-423-8869



QUICKSILVER ENDURANCE RIDERS, INC.
P.O. BOX 71, NEW ALMADEN, CA. 95042

SUMMER TIME

AUGUST 1998



- August 1 FIREWORKS 30/50. R & T
Liz Maitoza 408-763-7885
- August 8 WESTERN STATES TRAIL RIDE - Tevis 100
Larry Suddjian 916-823-7282
- August 12 QUICKSILVER MEETING
Barbecue at Trilby's
- August 15 SWANTON PACIFIC 100
Barbara McCravy 408-423-4572
- August 15 REDWOOD 25/50
Elaine Kerrigan 707-443-0215
- August 22 NEVADA 25/50
Tom Lewis 702-577-9616

